



3258 Klanawa Crescent - Lot 24 Northridge Estates Courtenay, BC

This stunning 4 bedroom, 4 bathroom main level entry walk out basement boasts a fully finished legal suite. The home is thoughtfully designed with 7" hardwood flooring, heated tile bathroom floors, custom kitchen cabinets with quartz countertops. Enjoy a beautiful view of the woodlands on your covered patio or through your large windows in your living area with vaulted ceilings. Call us today to choose your colours & finishing choices!

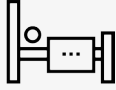


BALLARD[®]

FINE HOMES



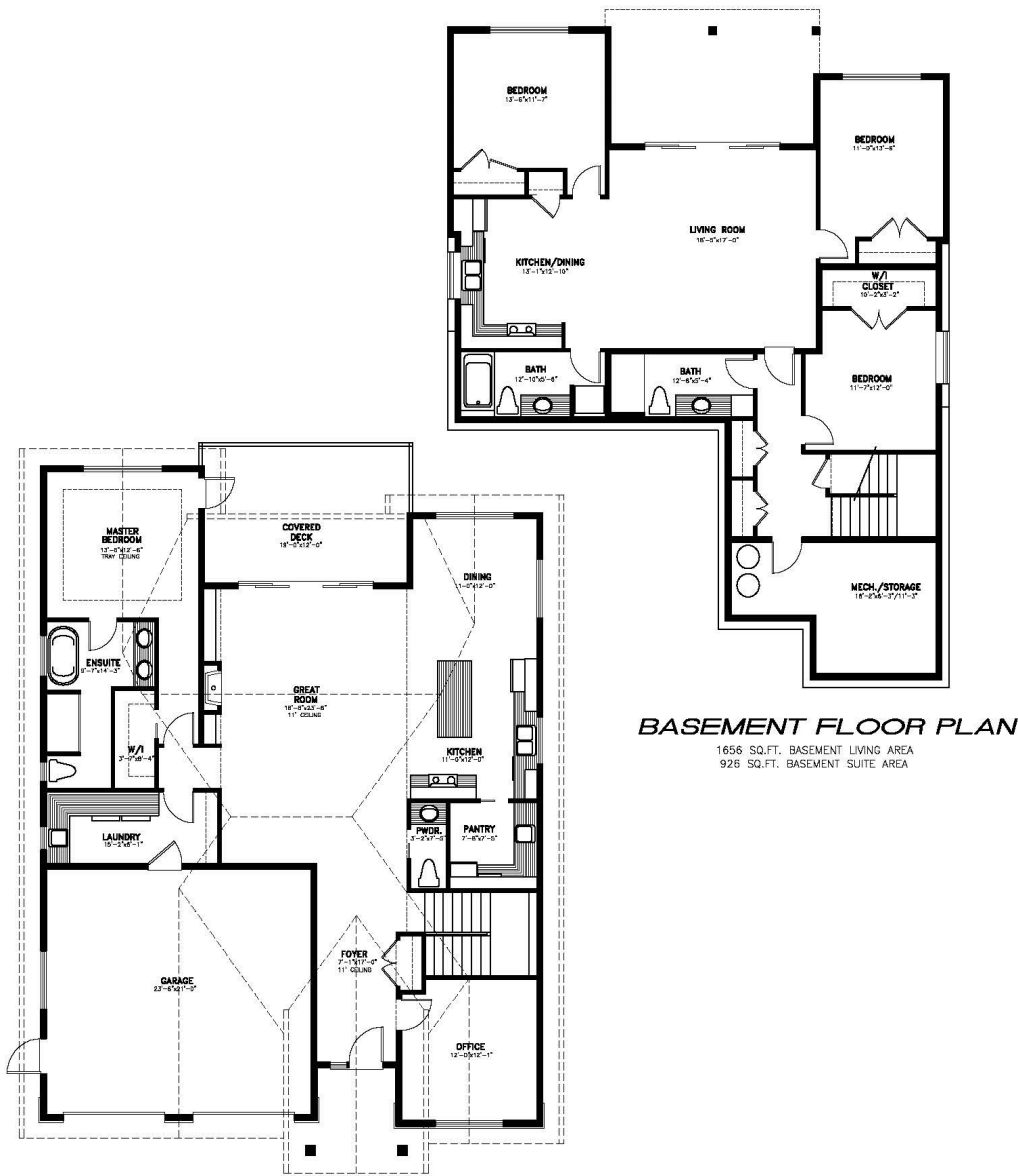
3325
Square Feet



4
Bedrooms



4
Bathrooms



MAIN FLOOR PLAN

1669 SQ.FT. MAIN FLOOR LIVING AREA
3325 SQ.FT. LIVING AREA TOTAL
PLAN NUMBER 22-071
44'-6"W x 61'-0"D

BASEMENT FLOOR PLAN

1656 SQ.FT. BASEMENT LIVING AREA
926 SQ.FT. BASEMENT SUITE AREA