



1168 Silversmith Place - Lot 4 Edgewood Estates Comox, BC

This big and beautiful 2835 sqft main level entry with a full legal suite downstairs. It has an open concept with a gourmet kitchen including stainless appliances, custom cabinetry with soft close drawers & quartz countertops. The primary bedroom has a stunning ensuite and a large walk-in closet. The backyard is professionally landscaped with a beautiful garden and a stamped concrete patio. Enjoy the quietness in your backyard.

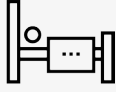


BALLARD[®]

FINE HOMES



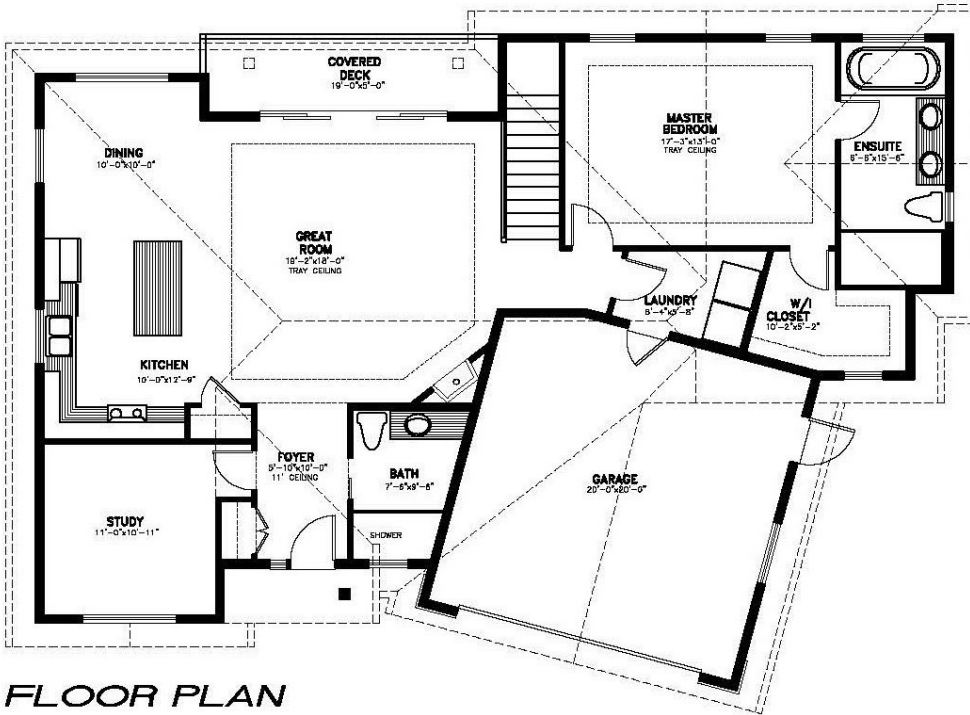
2,835
Square Feet



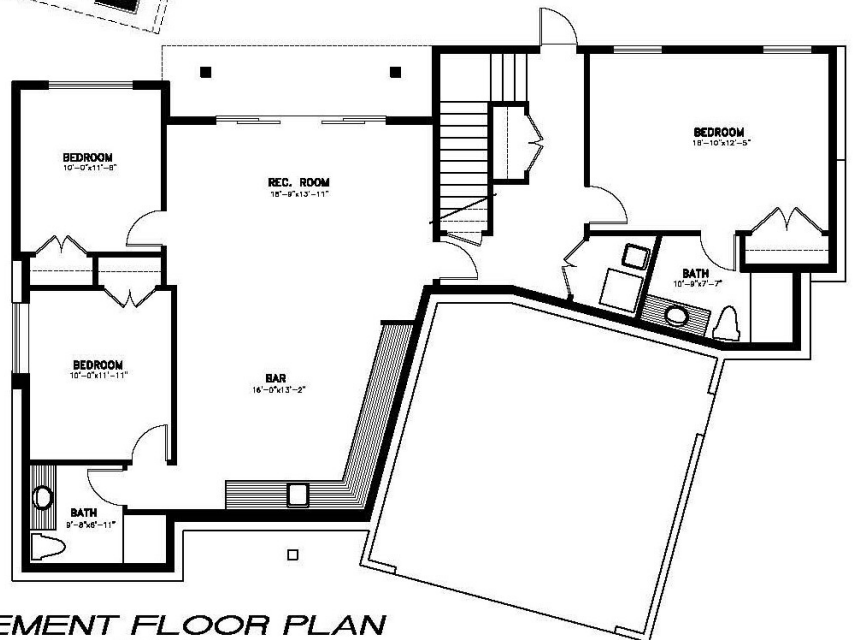
4
Bedrooms



4
Bathrooms



MAIN FLOOR PLAN



BASEMENT FLOOR PLAN

1368 SQ.FT. BASEMENT FLOOR