

Wembley Woods



Phase 2 of Wembley Woods subdivision begins in Spring of 2022. It is located within walking distance to Wembley Mall and BC transit. This unbeatable location is once in a lifetime opportunity with close proximity to the mall, schools, Morningstar Golf Course, French Creek Marina and downtown Parksville. The large spacious lots are a rare find in a beautifully treed and serene location.



BALLARD
FINE HOMES

Dream **Building**
is **WHAT** we do.

Reserve Your Lot Today!
250-586-9077

250-586-9077 | info@ballardfinehomes.com | www.ballardfinehomes.com | 546 Island Hwy W, Parksville, BC V9P 1H2

Wembley Woods



Lot 1 | 8180 ft²

Lot 2 | 7739 ft²

Lot 3 | 7739 ft²

Lot 4 | 8234 ft²

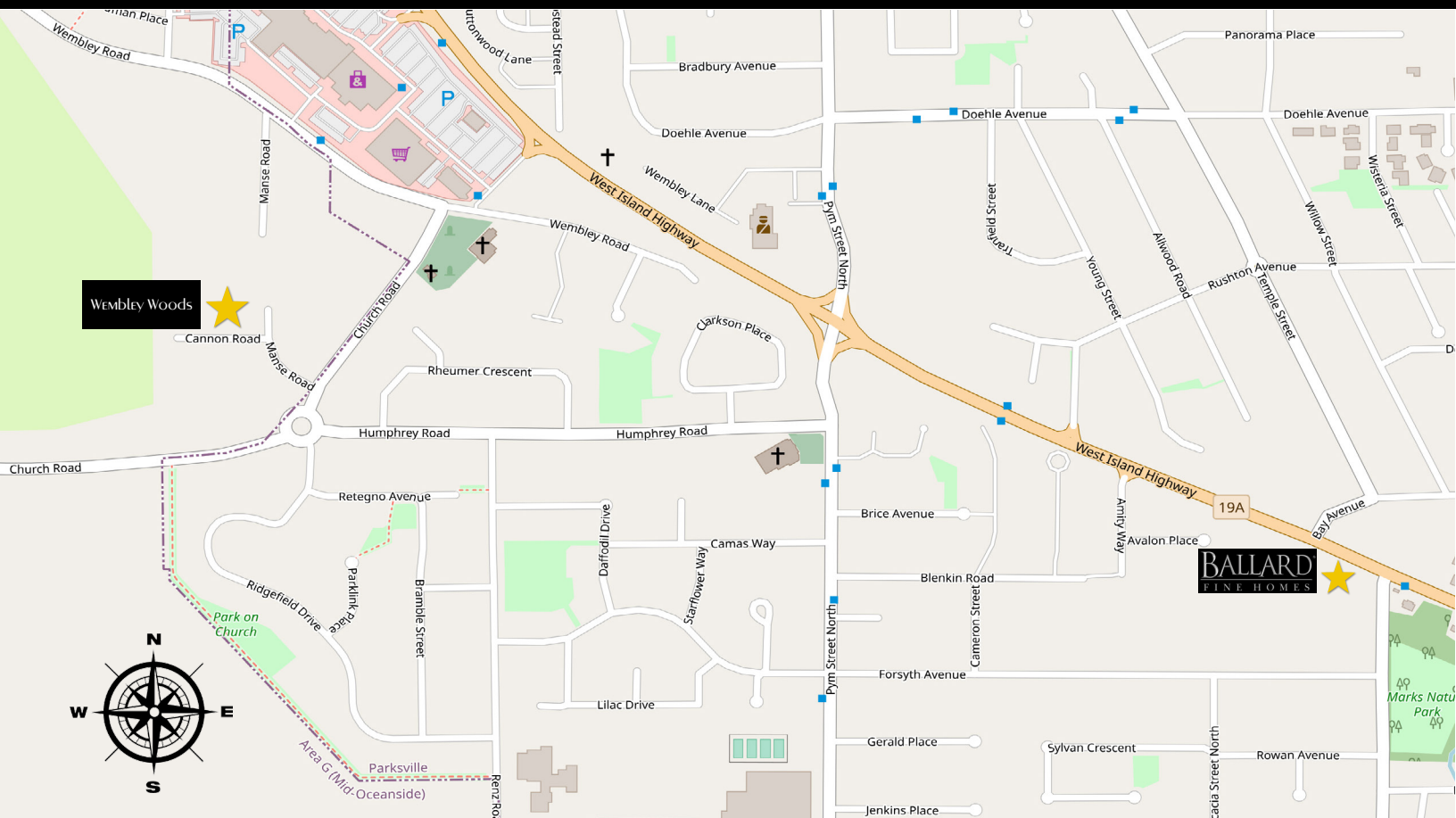
Lot 5 | 8191 ft²

Lot 6 | 10,408 ft²

Lot 7 | 8482 ft²

Lot 8 | 8859 ft²

Lot 9 | 9225 ft²



BALLARD
FINE HOMES

Dream **Building**
is **WHAT** we do.

Reserve Your Lot Today!

250-586-9077

250-586-9077 | info@ballardfinehomes.com | www.ballardfinehomes.com | 546 Island Hwy W, Parksville, BC V9P 1H2