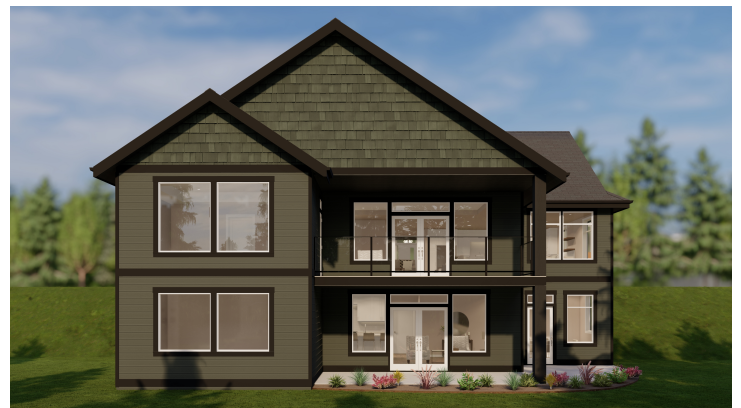




3148 Mission Road - Lot 1 Northridge Estates Courtenay, BC

This beautiful executive main level entry house has a fully separate finished suite below. The open concept floor plan has vaulted ceilings, stunning floor-to-ceiling stone fireplace. A gourmet kitchen with custom cabinetry, granite/quartz countertops and a hidden pantry. Amazing curb appeal, this home boasts natural stone accents with a cover stamped concrete patio. Fully landscaped fenced yard. Call today to customize your dream home!

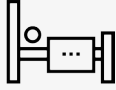


BALLARD[®]

FINE HOMES



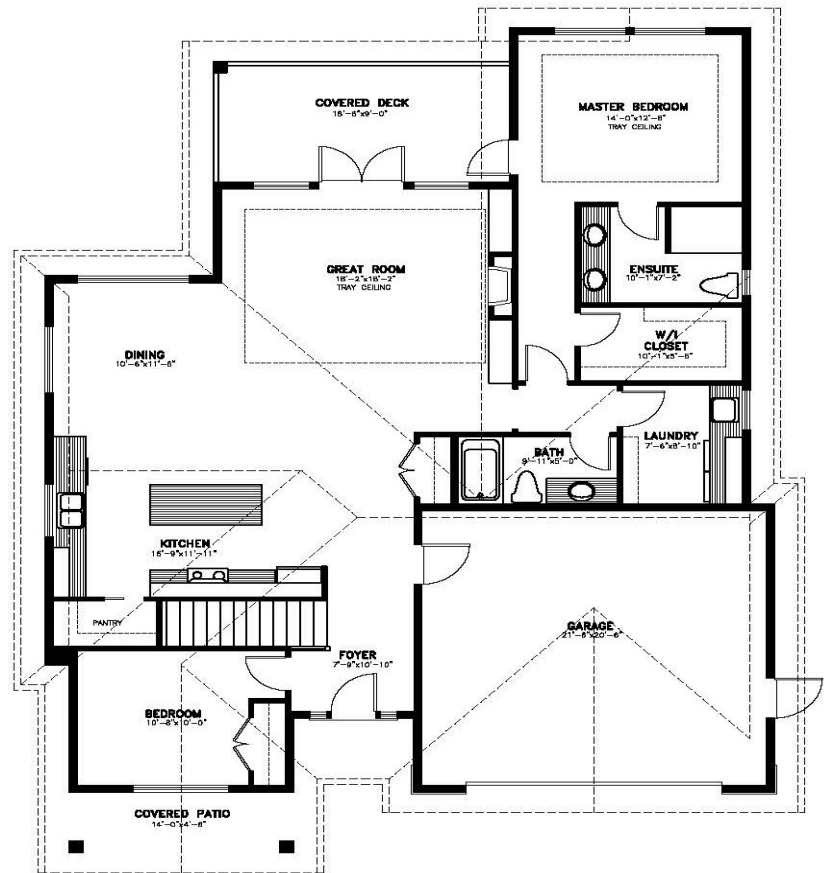
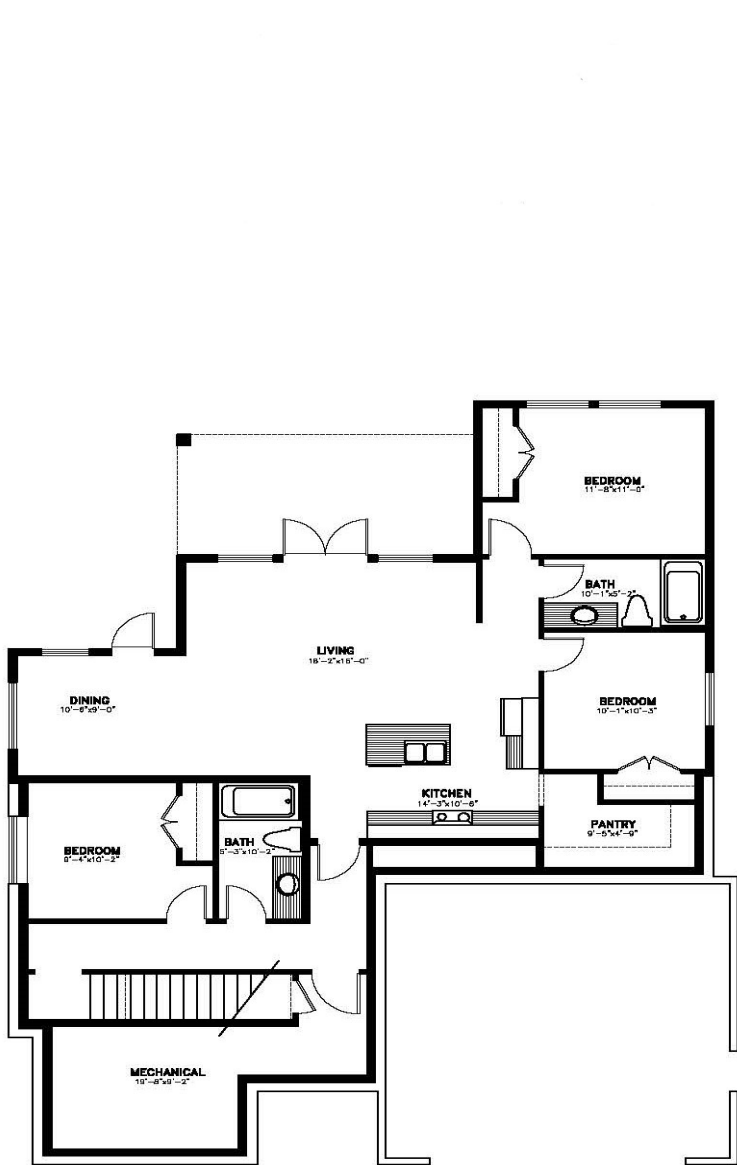
3,135
Square Feet



5
Bedrooms



4
Bathrooms



MAIN FLOOR PLAN

1588 SQ.FT. MAIN FLOOR LIVING AREA
LIVING AREA TOTAL: 3135 SQ.FT.
PLAN NUMBER 21-077
45'-6"W x 61'-6"D

BASEMENT FLOOR PLAN

MAIN HOUSE BASEMENT LIVING AREA: 579 SQ.FT.
SUITE LIVING AREA: 968 SQ.FT.
BASEMENT LIVING AREA TOTAL: 1547 SQ.FT.