



3205 Klanawa Crescent - Lot 11 Northridge Estates Courtenay, BC

Beautiful executive rancher with an open concept living featuring soaring vaulted ceilings, hardwood flooring and stunning floor-to-ceiling stone fireplace complementing gorgeous kitchen with custom cabinetry, granite/quartz countertops and hidden pantry. Amazing curb appeal with natural stone accents, solid timber post & beams and a covered stamped concrete patio. Fully landscaped fenced yard with irrigation completes the private and tranquil lot!

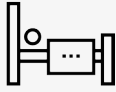


BALLARD[®]

FINE HOMES



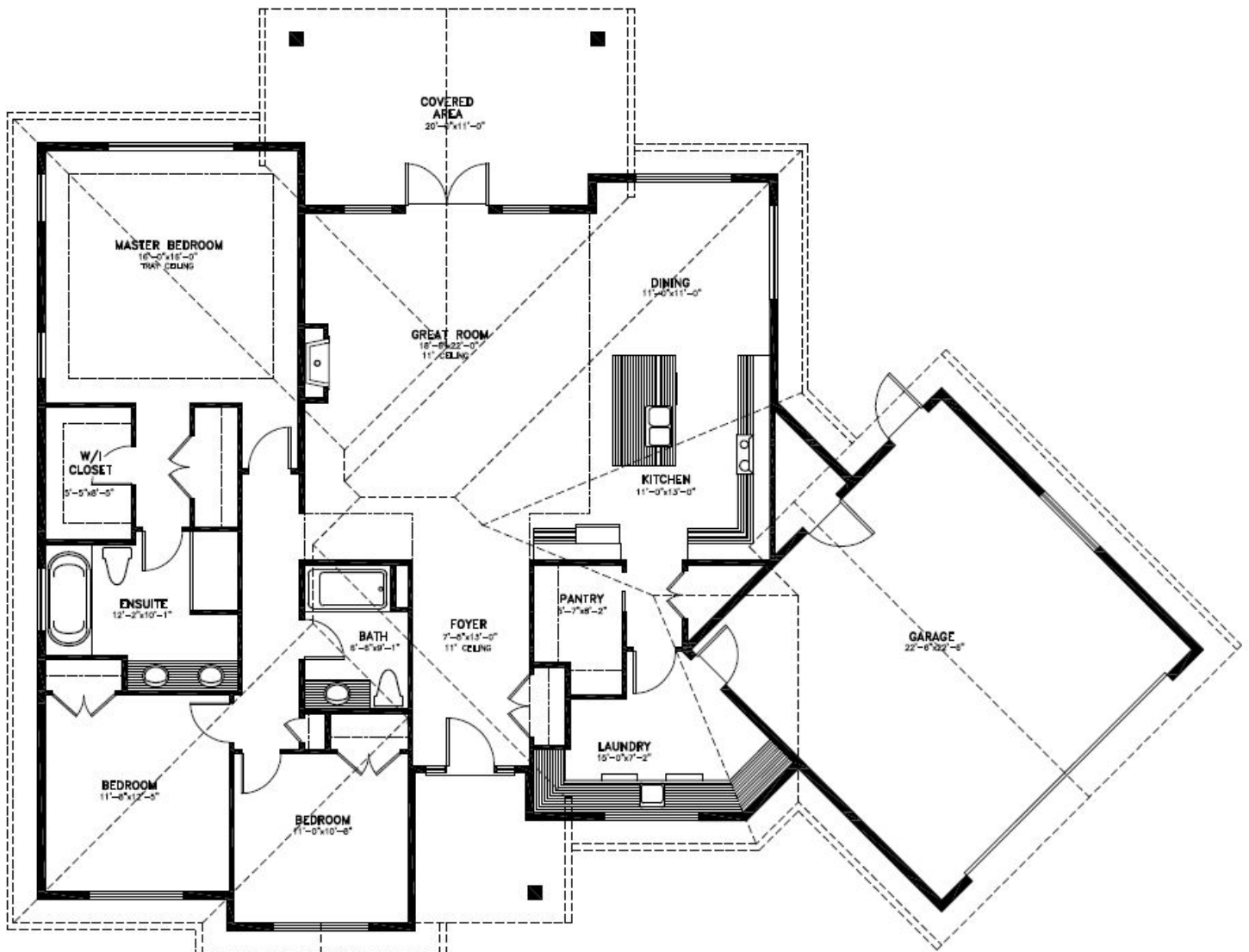
2,044
Square Feet



3
Bedrooms



2
Bathrooms



MAIN FLOOR PLAN

2044 SQ.FT. MAIN FLOOR LIVING AREA
PLAN NUMBER 21-072
74'-0"W x 57'-0"D